



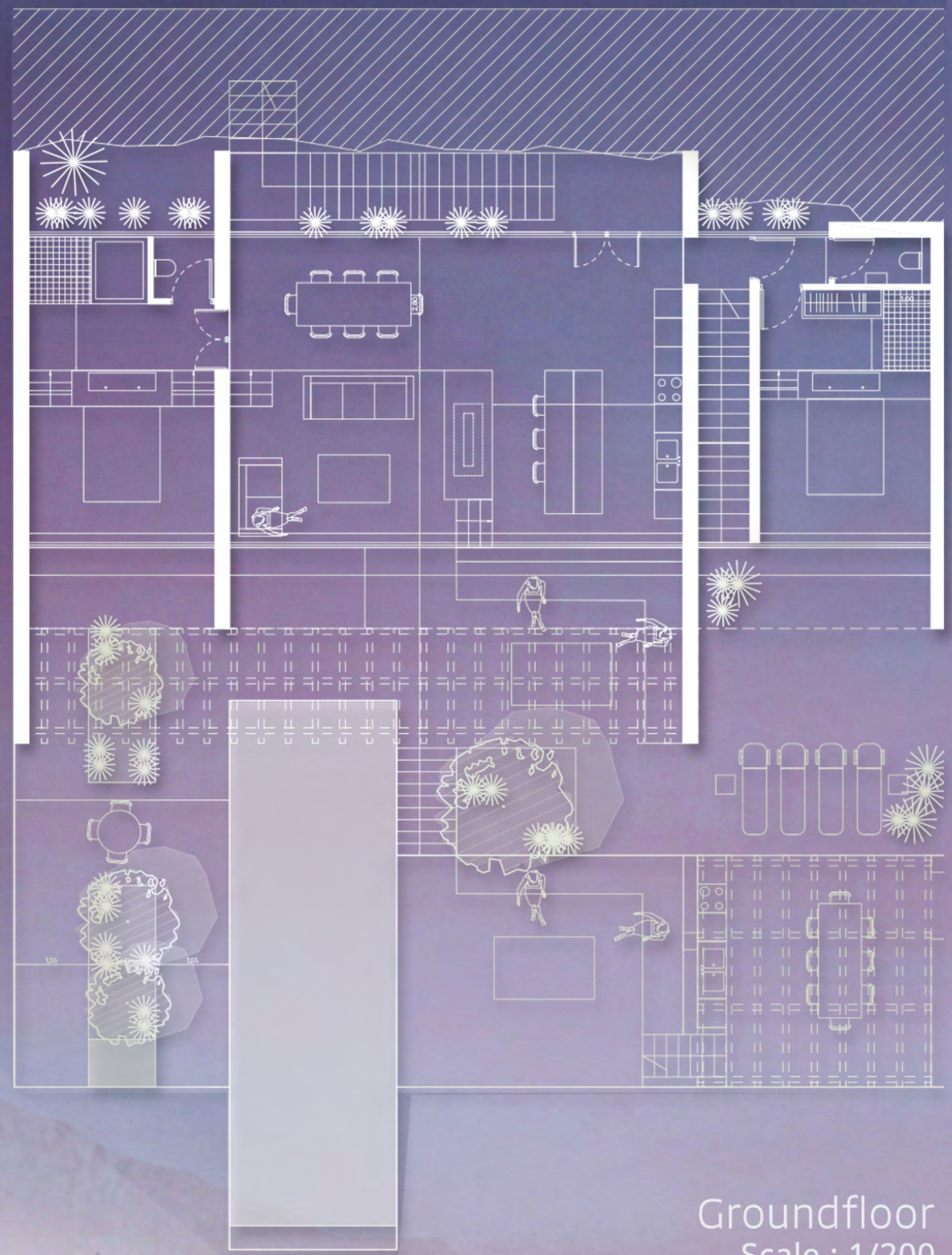
---

Architectural plans and design

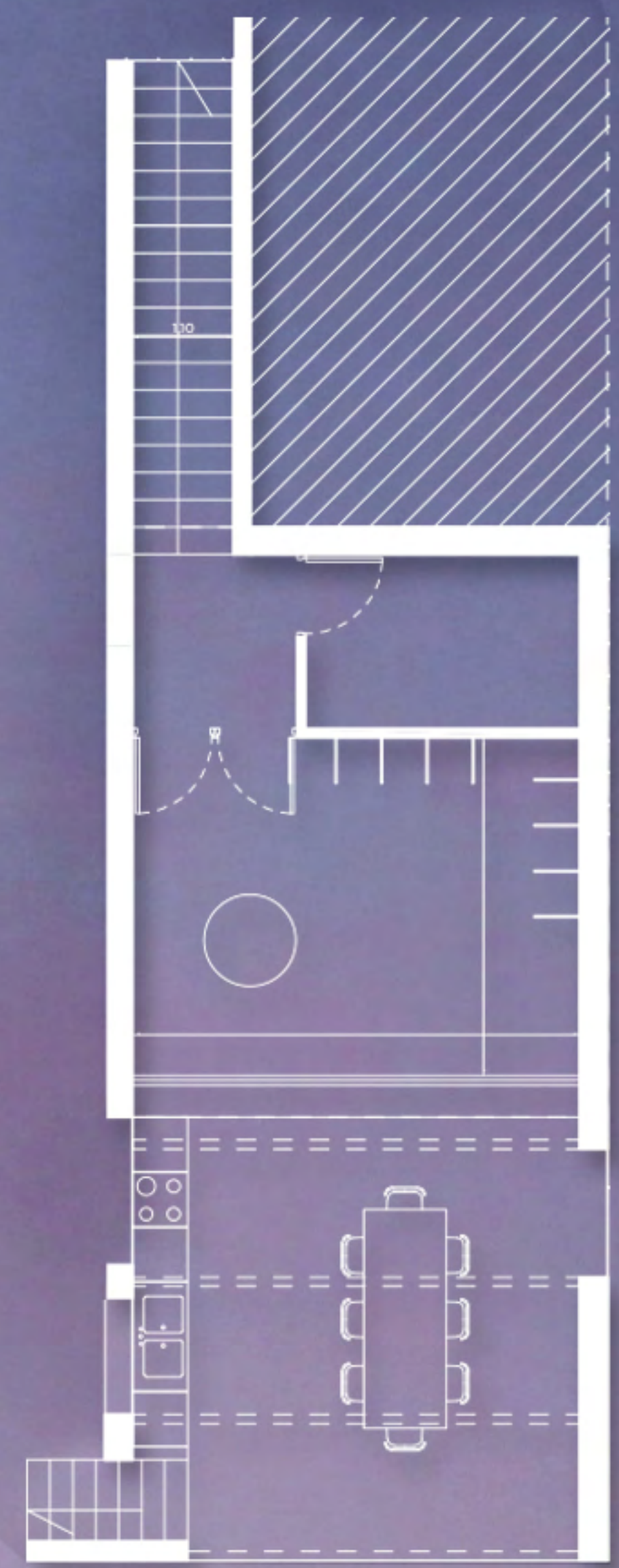
**Villa Type 1**  
The Skyline Villa



Villa Type 1  
The Skyline villa



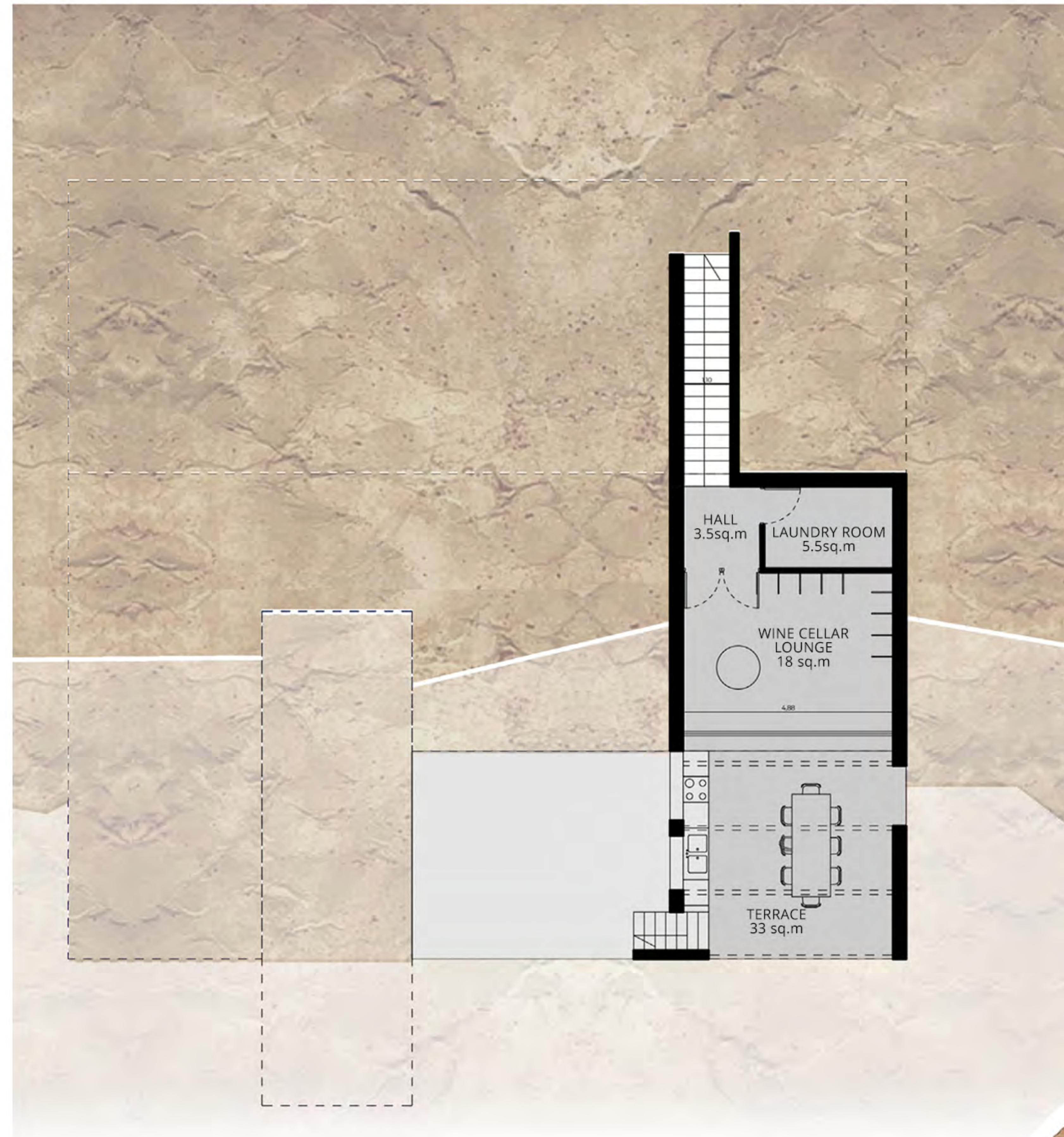
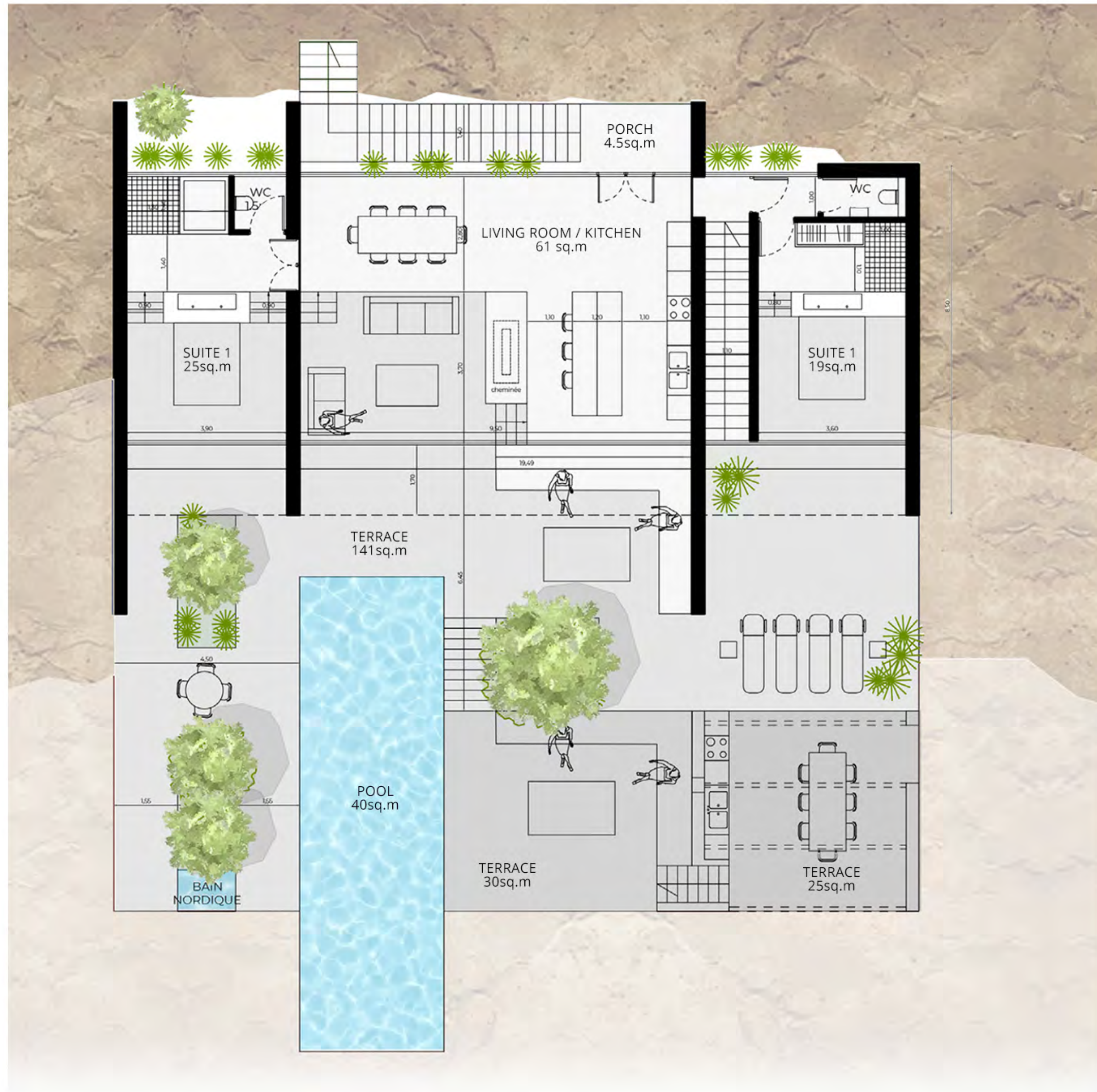
Groundfloor  
Scale : 1/200



Basement  
Scale : 1/200





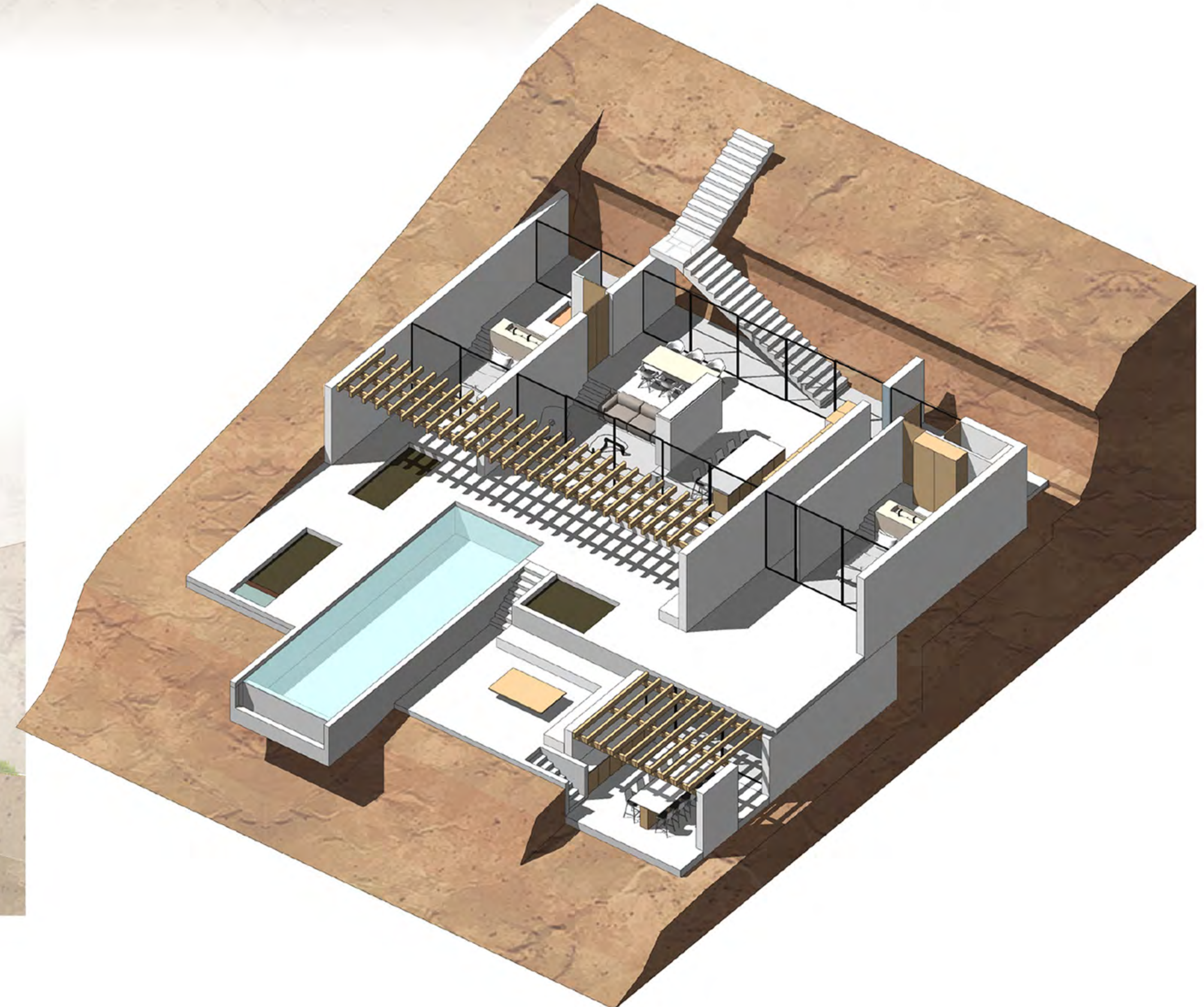
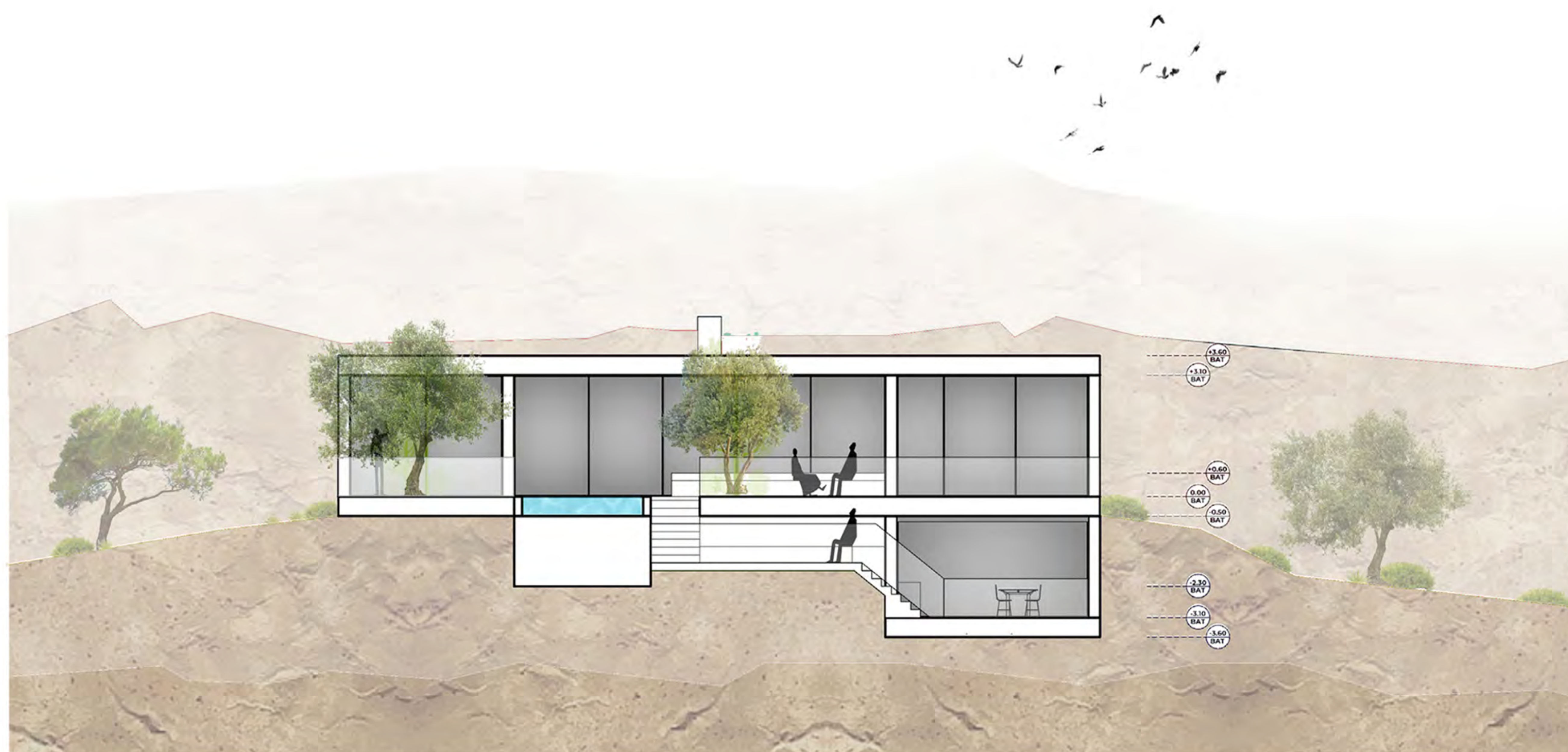


## VILLA FEATURES

Project characteristic per unit

### Incave Villa

- Total built area : 382 sq.m
- Indoor area : 137 sq.m
- Outdoor area : 245 sq.m
- Terrace : 200 sq.m
- 2 bedrooms / 2 bathrooms
- Wine cellar Lounge
- Laundry room
- Endless sea view
- Infinity pool : 40 sq.m
- Outdoor lounge with pergola
- Private parking





ON THE VIEW FROM THE MASTER BEDROOM OF THE SKYLINE VILLA

---







*The height*



Akti Miaouli 59, Pireas 185 36, Greece  
contact@kamaigroup.com  
Προβολή, αρχιτεκτονική και κατασκευή

---

Architectural plans and design

All images, plans, and descriptions provided in this brochure are for illustrative purposes only and do not constitute a contractual commitment. They are subject to change without prior notice. We reserve the right to modify the features, materials, equipment, and dimensions of the properties presented while ensuring the maintenance of high standards of quality and design.

We disclaim any liability for typographical errors, omissions, or inaccuracies in the provided documentation.

We are committed to working closely with you to customize every aspect of your villa while ensuring accurate and up-to-date information at all times.

Additionally, please be aware that changes in the plans may affect construction costs, and financial adjustments may be necessary accordingly.

For further details on our terms and conditions of sale, please contact us directly.