

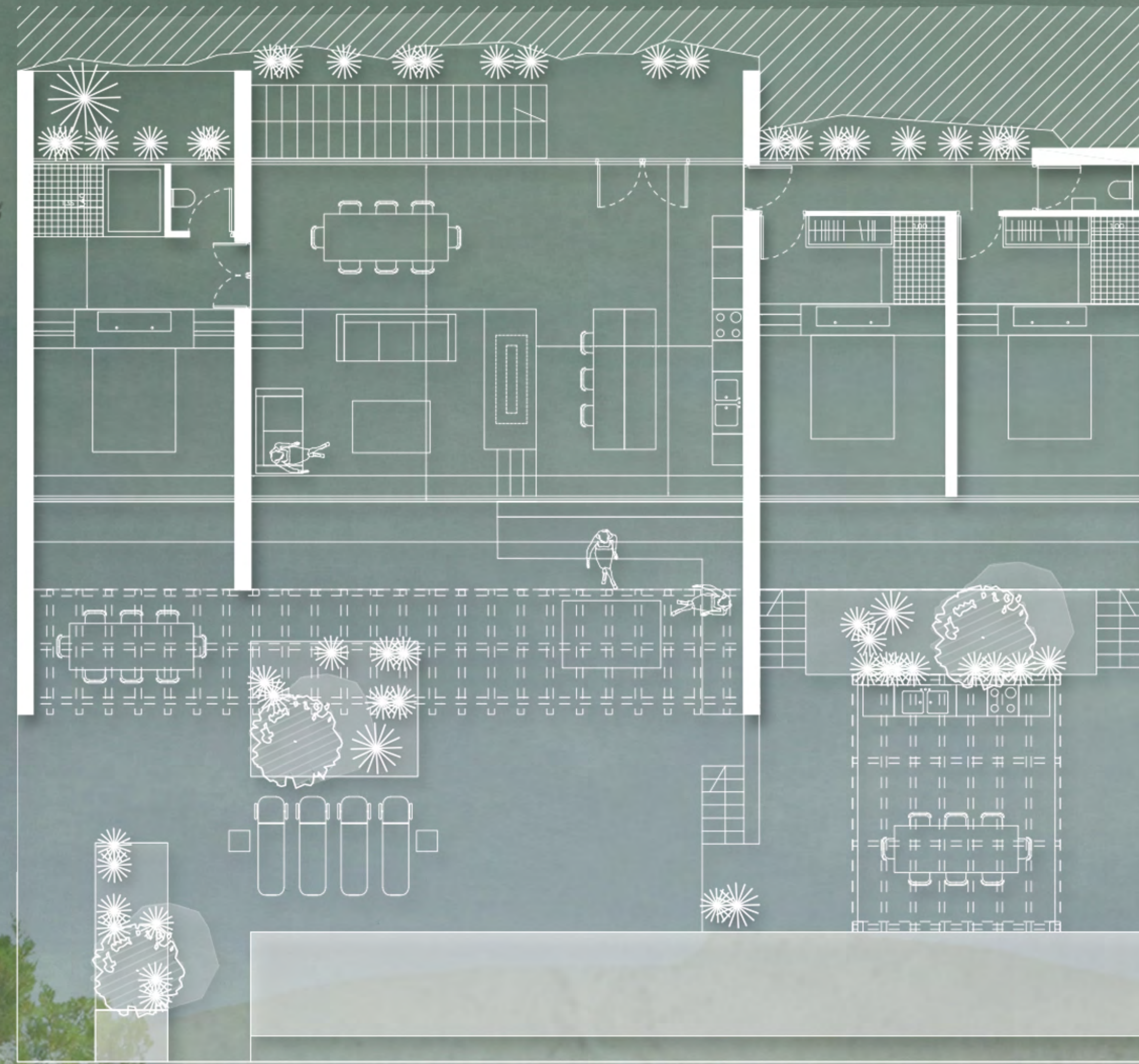


Architectural plans and design

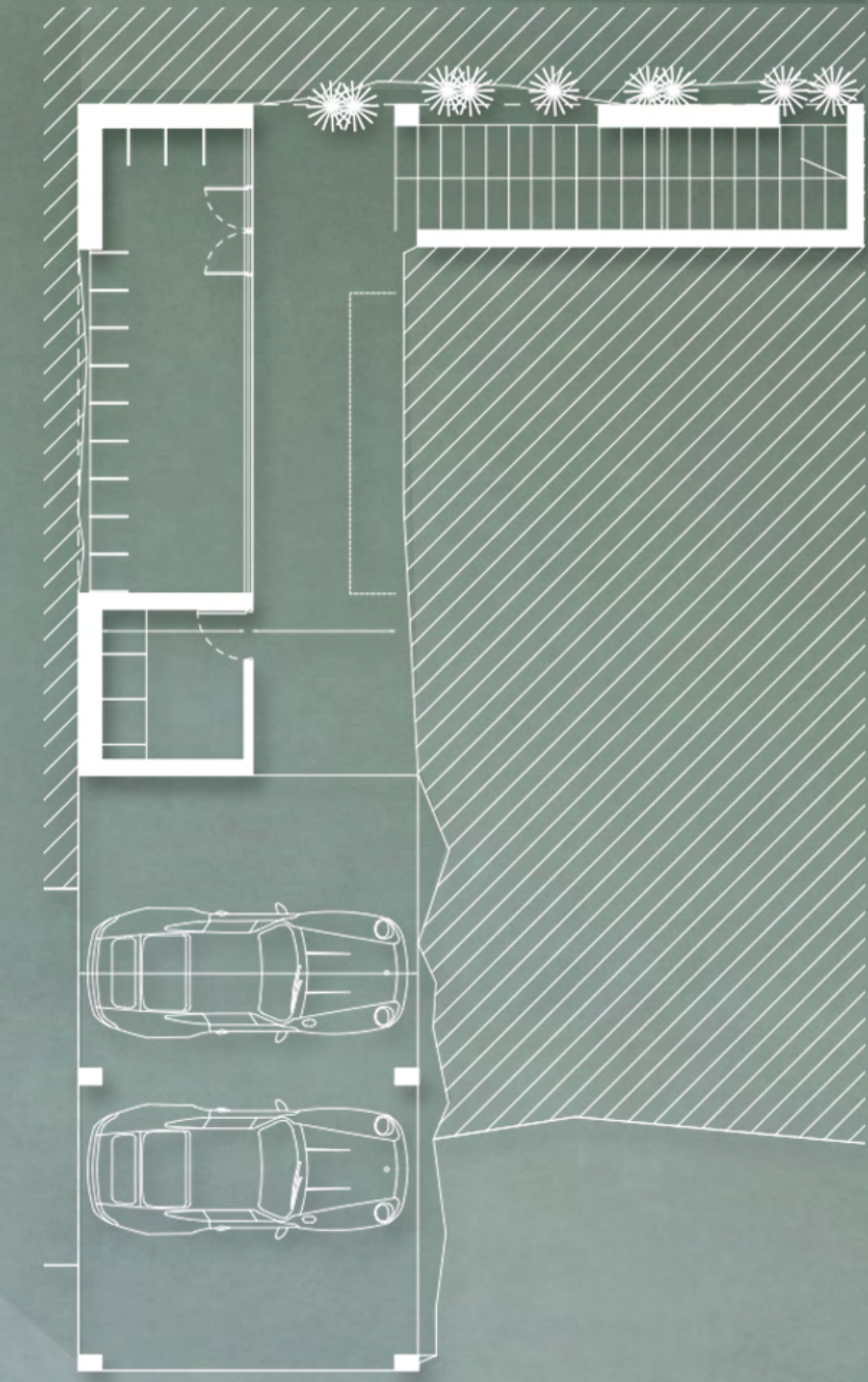
Villa Type 2

The Horizon Heights

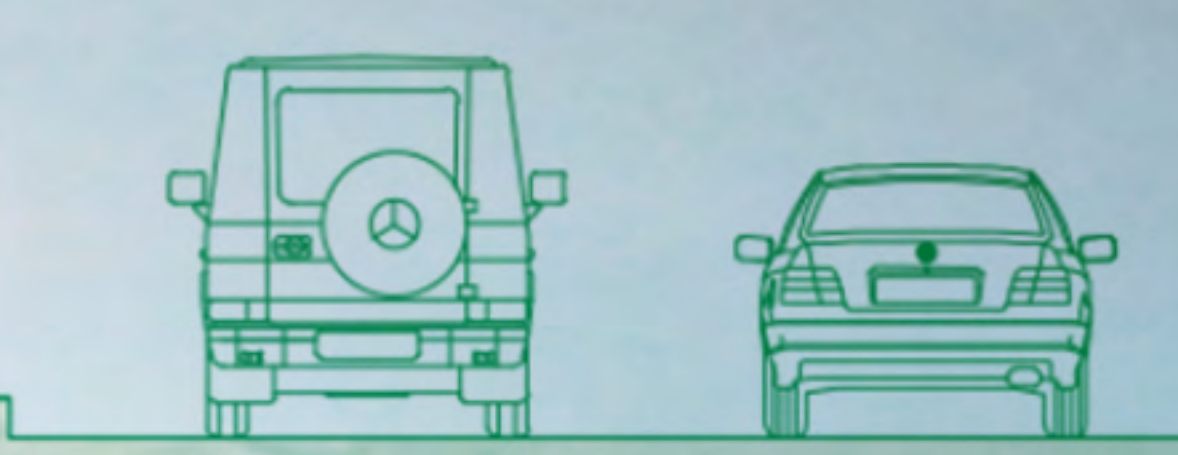
Villa Type 2
The Horizon Heights

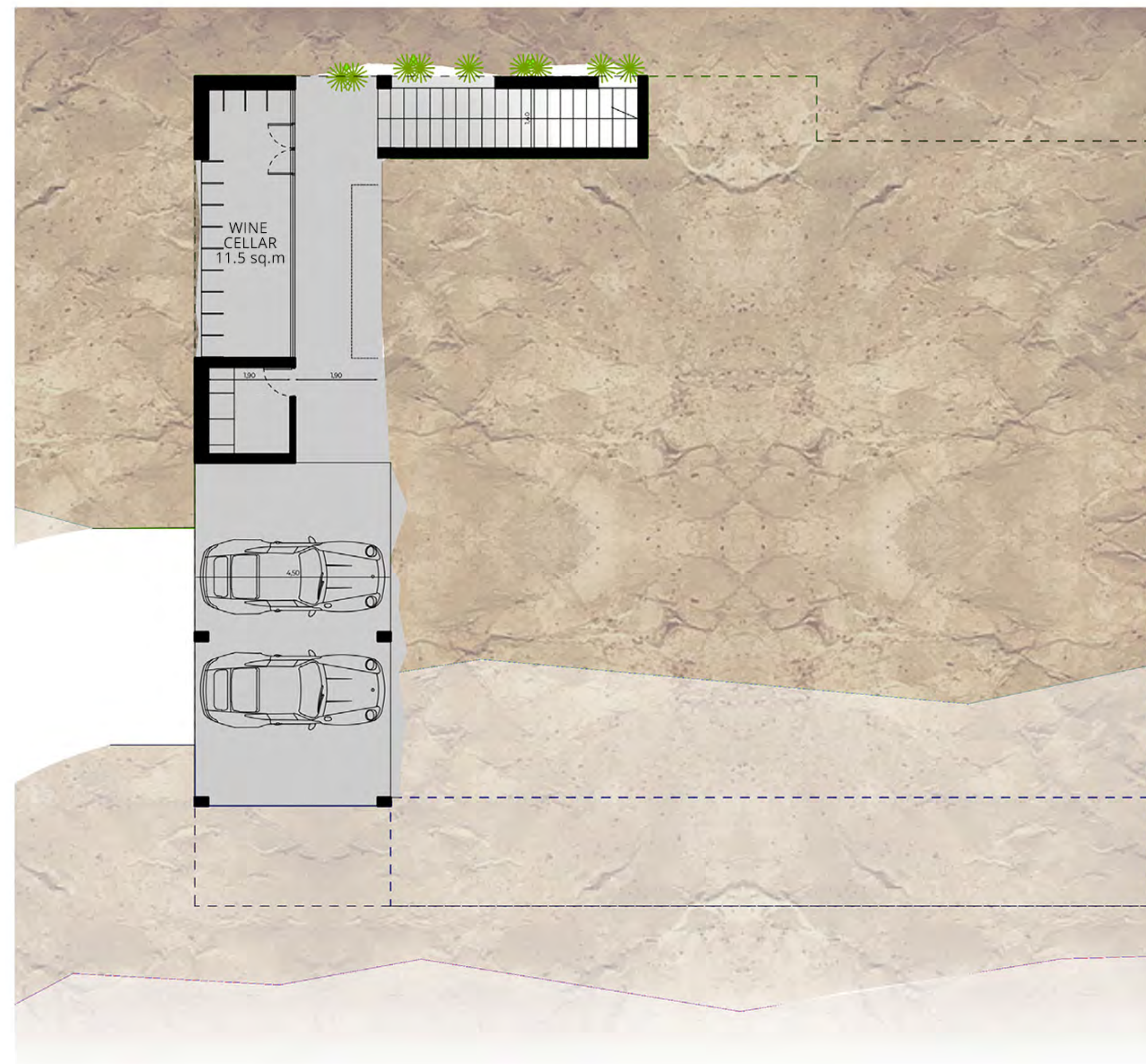
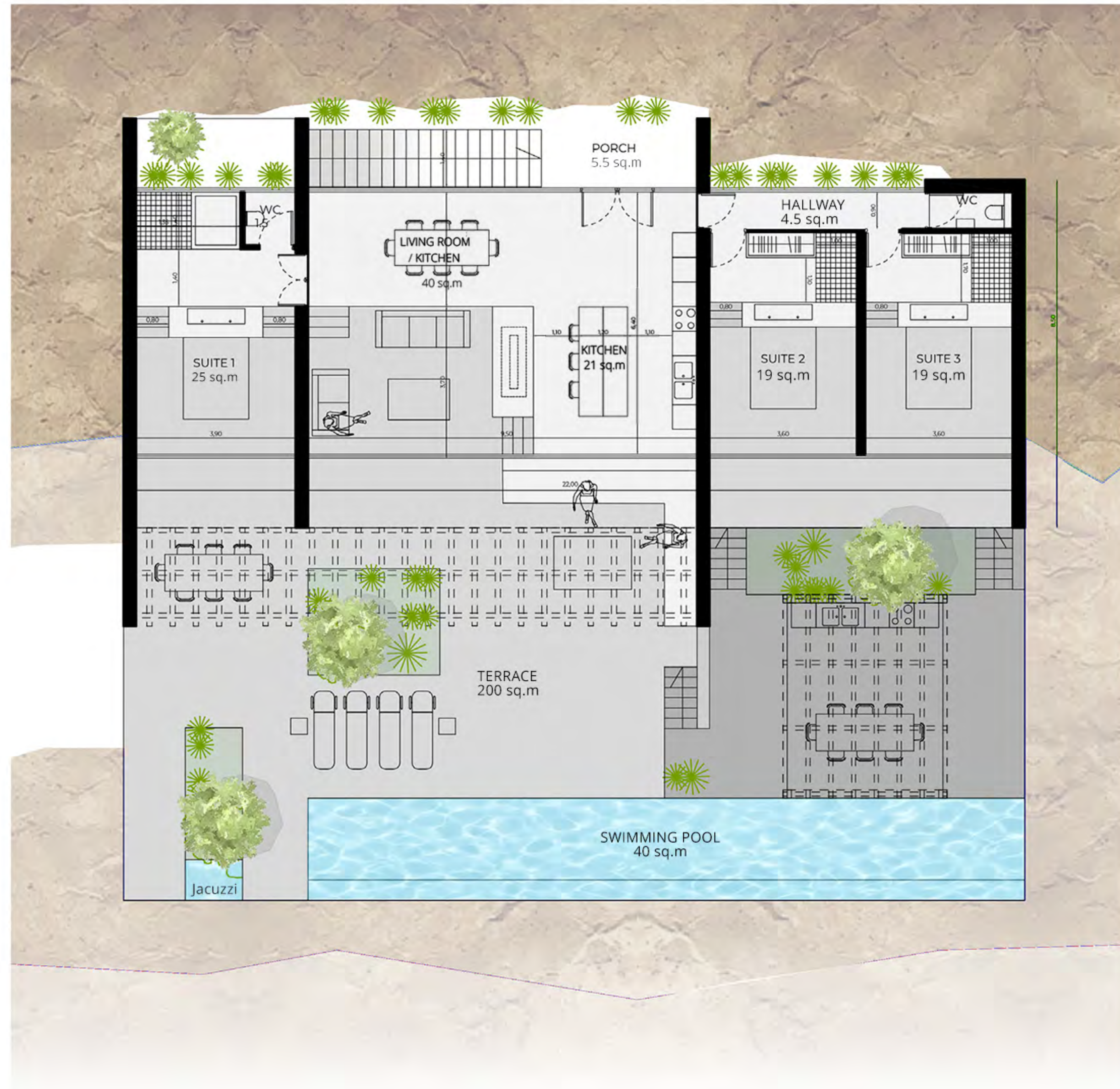


Groundfloor
Scale : 1/200



Basement
Scale : 1/200



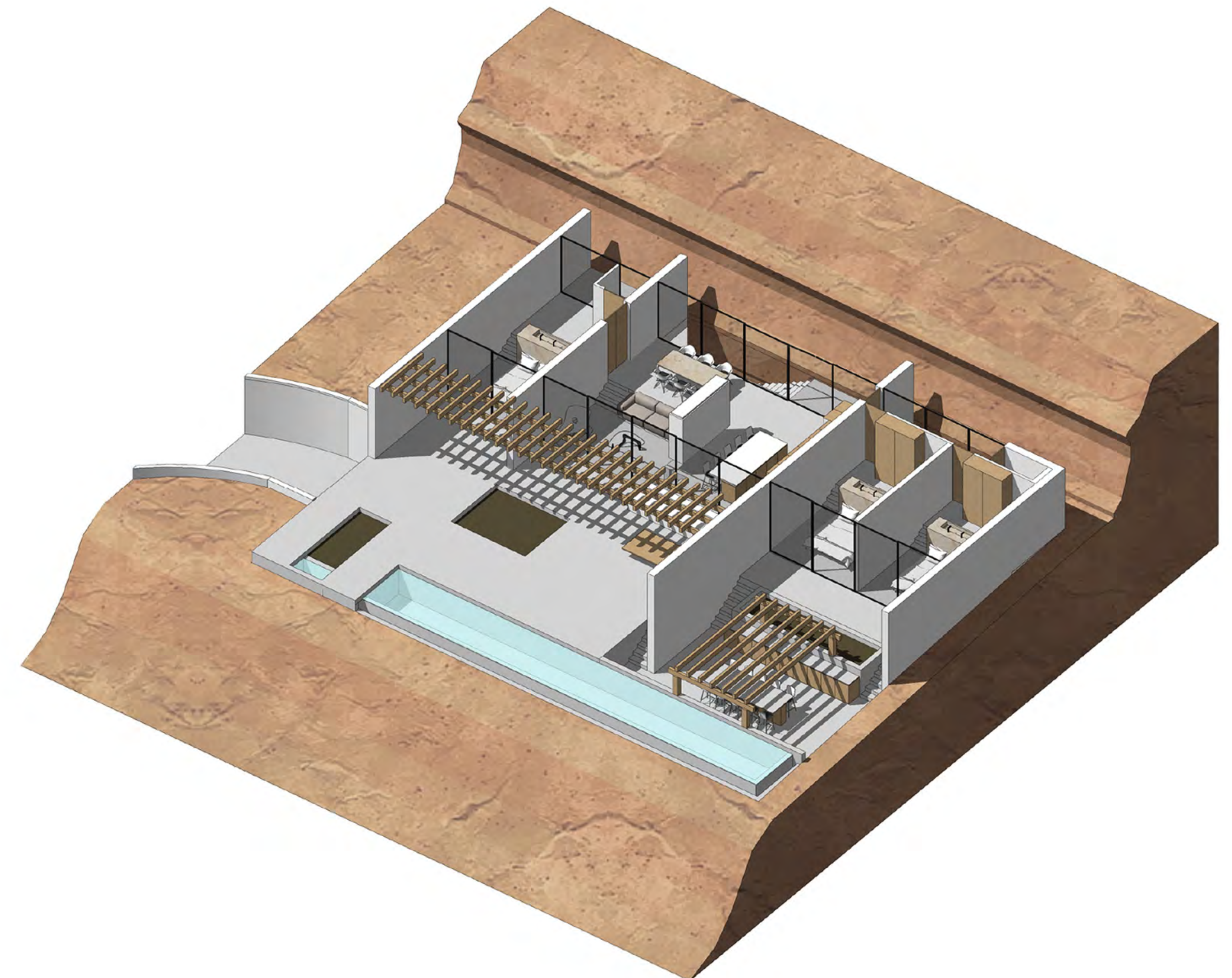
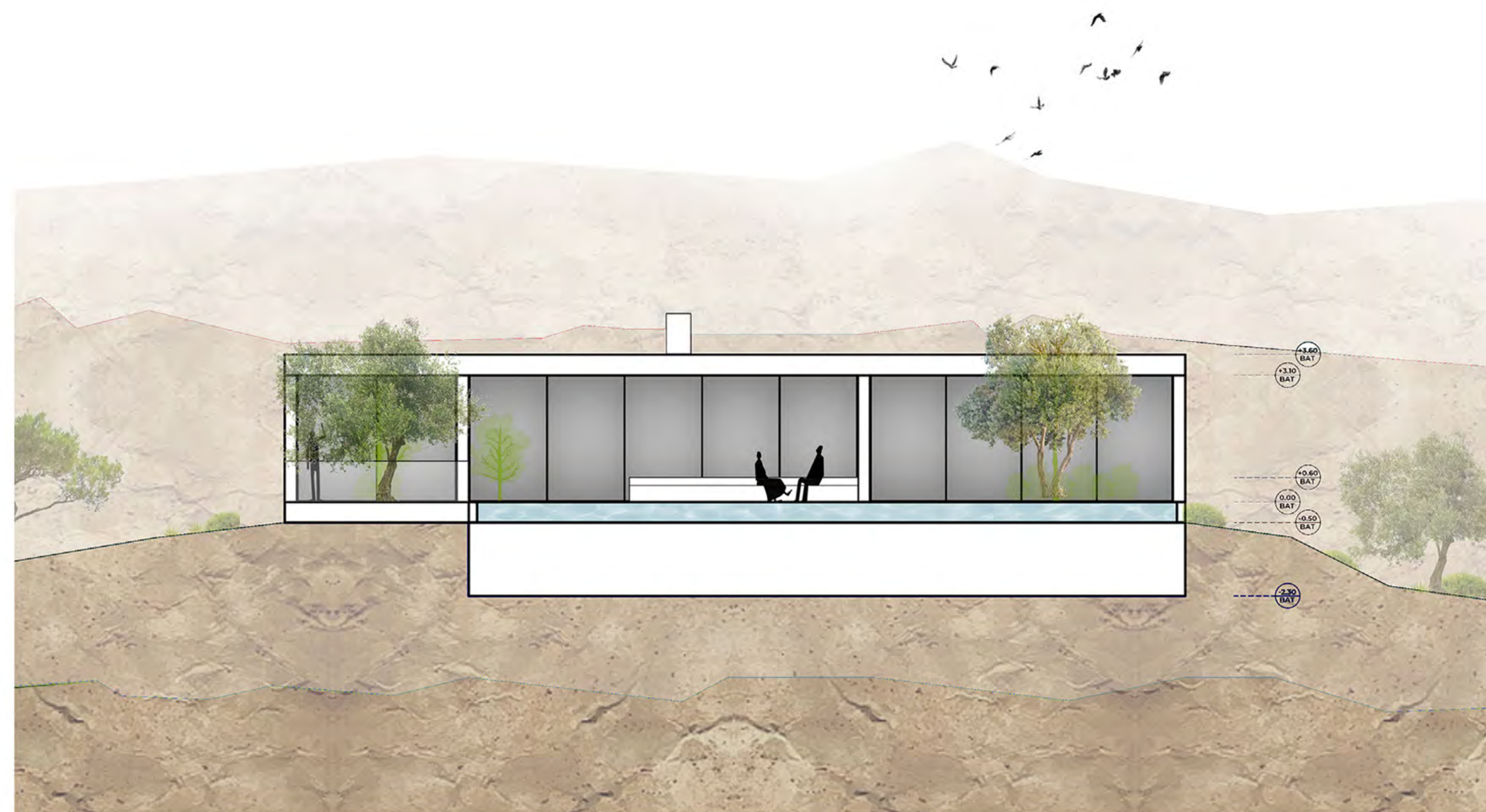


VILLA FEATURES

Project characteristic per unit

Incave Villa

- Total built area : 396 sq.m
- Indoor area : 146 sq.m
- Outdoor area : 250 sq.m
- Terrace : 200 sq.m
- 3 bedrooms / 3 bathrooms
- Wine cellar and a pantry
- Endless sea view
- Infinity pool : 44 sq.m
- Outdoor lounge with pergola
- Private parking





The height



Akti Miaouli 59, Pireas 185 36, Greece
contact@kamaigroup.com
Προβολή, αρχιτεκτονική και κατασκευή

Architectural plans and design

All images, plans, and descriptions provided in this brochure are for illustrative purposes only and do not constitute a contractual commitment. They are subject to change without prior notice. We reserve the right to modify the features, materials, equipment, and dimensions of the properties presented while ensuring the maintenance of high standards of quality and design.

We disclaim any liability for typographical errors, omissions, or inaccuracies in the provided documentation.

We are committed to working closely with you to customize every aspect of your villa while ensuring accurate and up-to-date information at all times.

Additionally, please be aware that changes in the plans may affect construction costs, and financial adjustments may be necessary accordingly.

For further details on our terms and conditions of sale, please contact us directly.